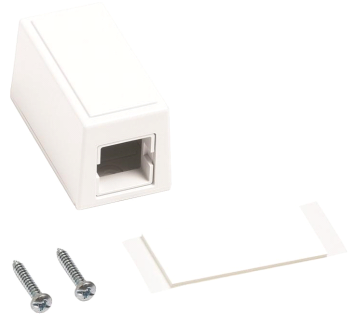


## M101 Type Surface Mount Box, single port white



### Product Classification

<b>Portfolio</b>	CommScope®
<b>Product Type</b>	Surface mount box
<b>Regional Availability</b>	Asia   Australia/New Zealand   EMEA   Latin America   North America

### General Specifications

<b>Mount Type</b>	Surface
<b>Application</b>	Used with M Series modular information outlet
<b>Color</b>	White
<b>Package Quantity</b>	1
<b>Total Ports, quantity</b>	1

### Dimensions

<b>Depth</b>	32.77 mm   1.29 in
<b>Height</b>	57.40 mm   2.26 in
<b>Weight</b>	0.04 kg   0.08 lb
<b>Width</b>	30.99 mm   1.22 in

### Mechanical Specifications

<b>Material Type</b>	High-impact, flame retardant, thermoplastic
----------------------	---------------------------------------------

### Environmental Specifications

<b>Flammability Rating</b>	UL 94 V-0
<b>Safety Standard</b>	cUL   UL

### Regulatory Compliance/Certifications

<b>Agency</b>	<b>Classification</b>
ISO 9001:2015	Designed, manufactured and/or distributed under this quality management system

